

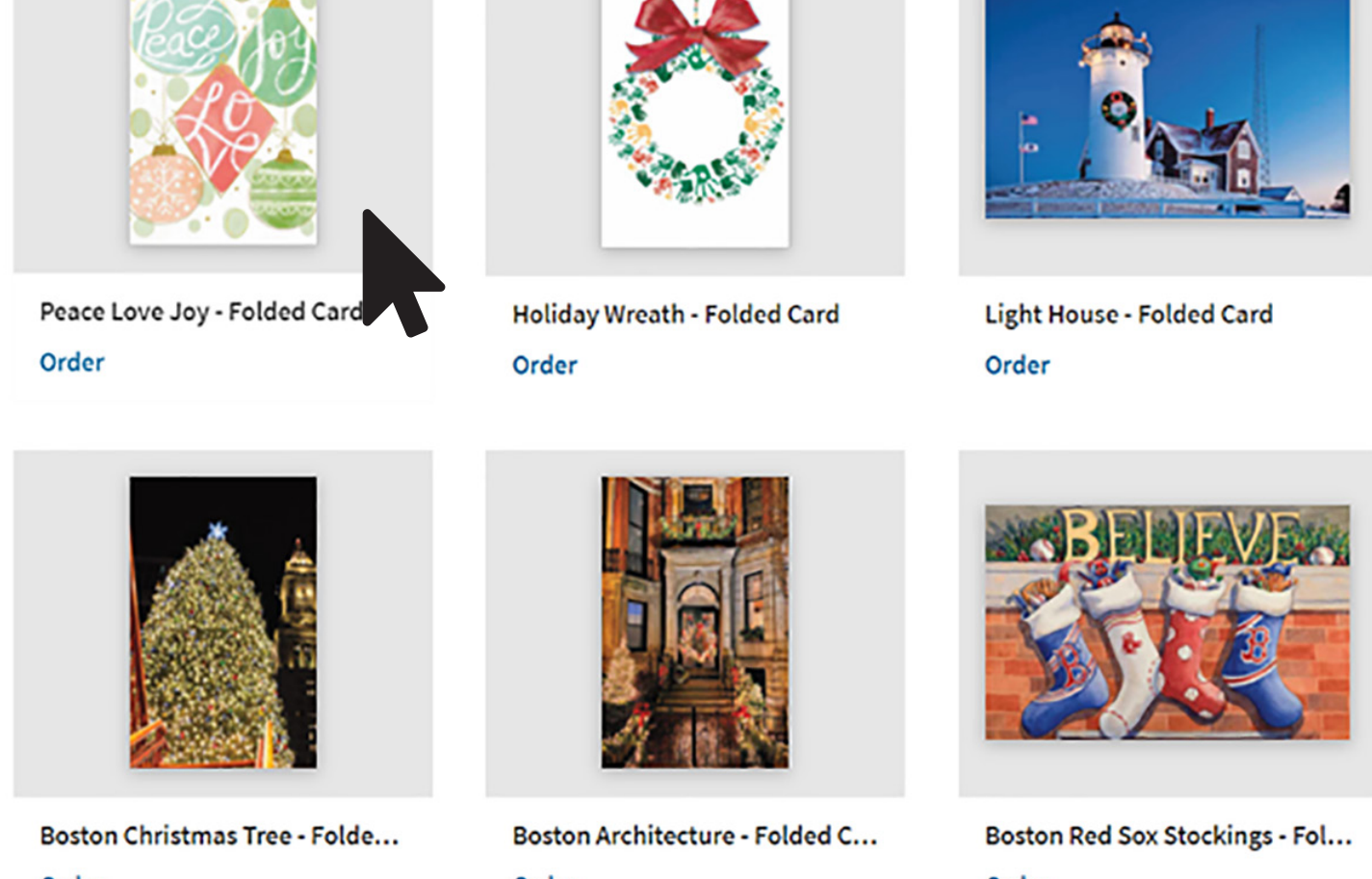
HOW TO PERSONALIZE YOUR HOLIDAY CARDS



Follow the below steps to make your holiday cards perfect!

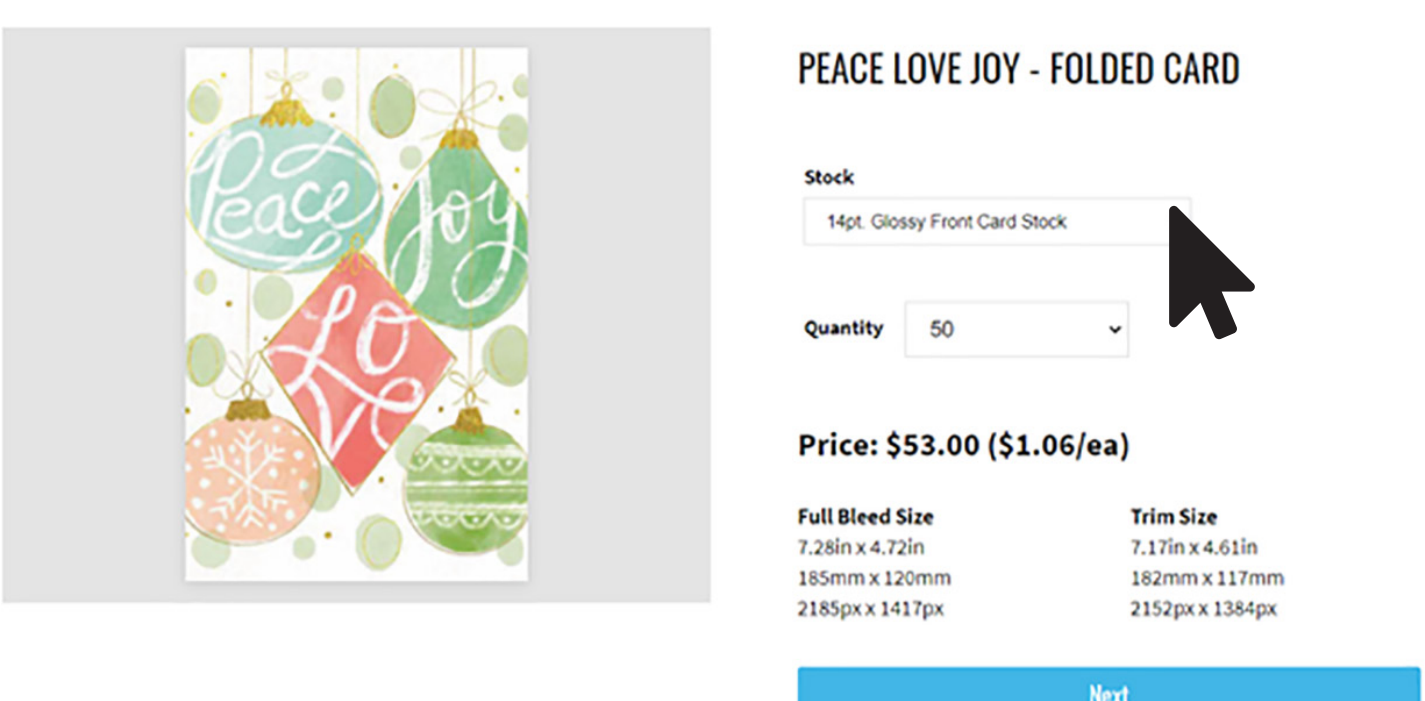
STEP 1 : CHOOSE YOUR CARD

Select your card design.



STEP 2 : SELECT YOUR OPTIONS

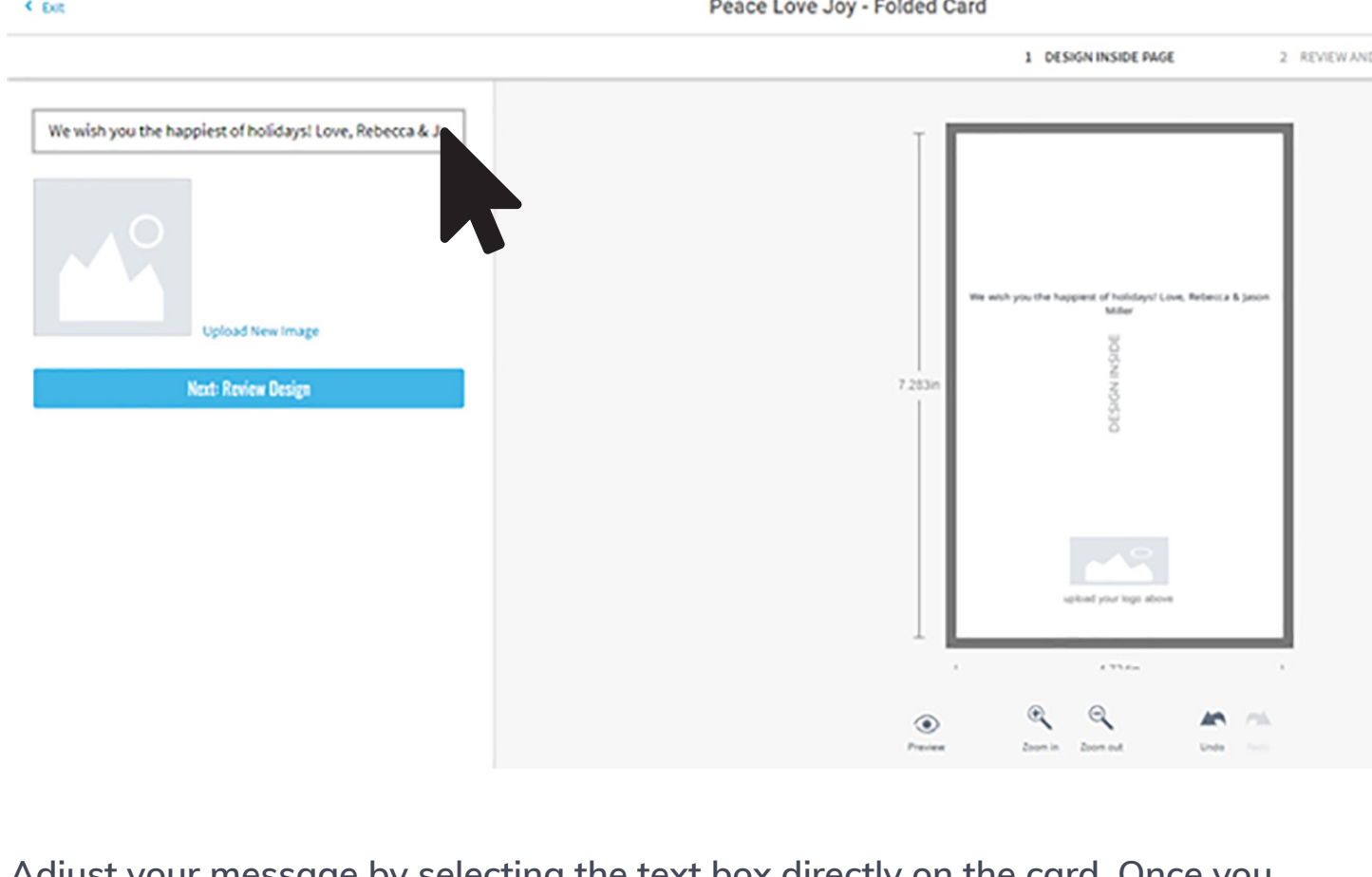
Select what stock you'd like. **Glossy Front Card Stock** will give the front of your card a shiny finish. **Linen** will give your card a textured feel. **Matte** will provide you with a flat finish. Then choose your quantity. (Don't worry, you can always update your quantity later!)



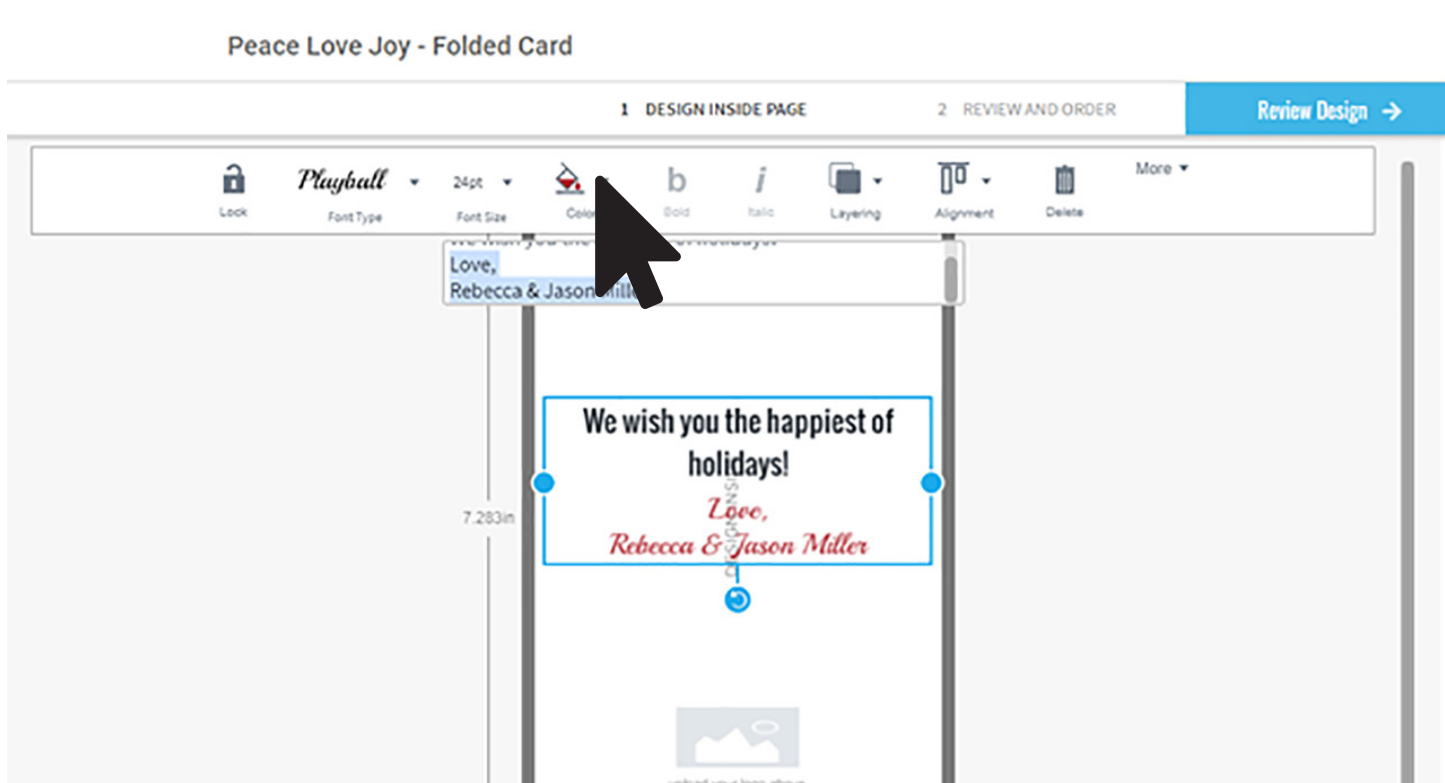
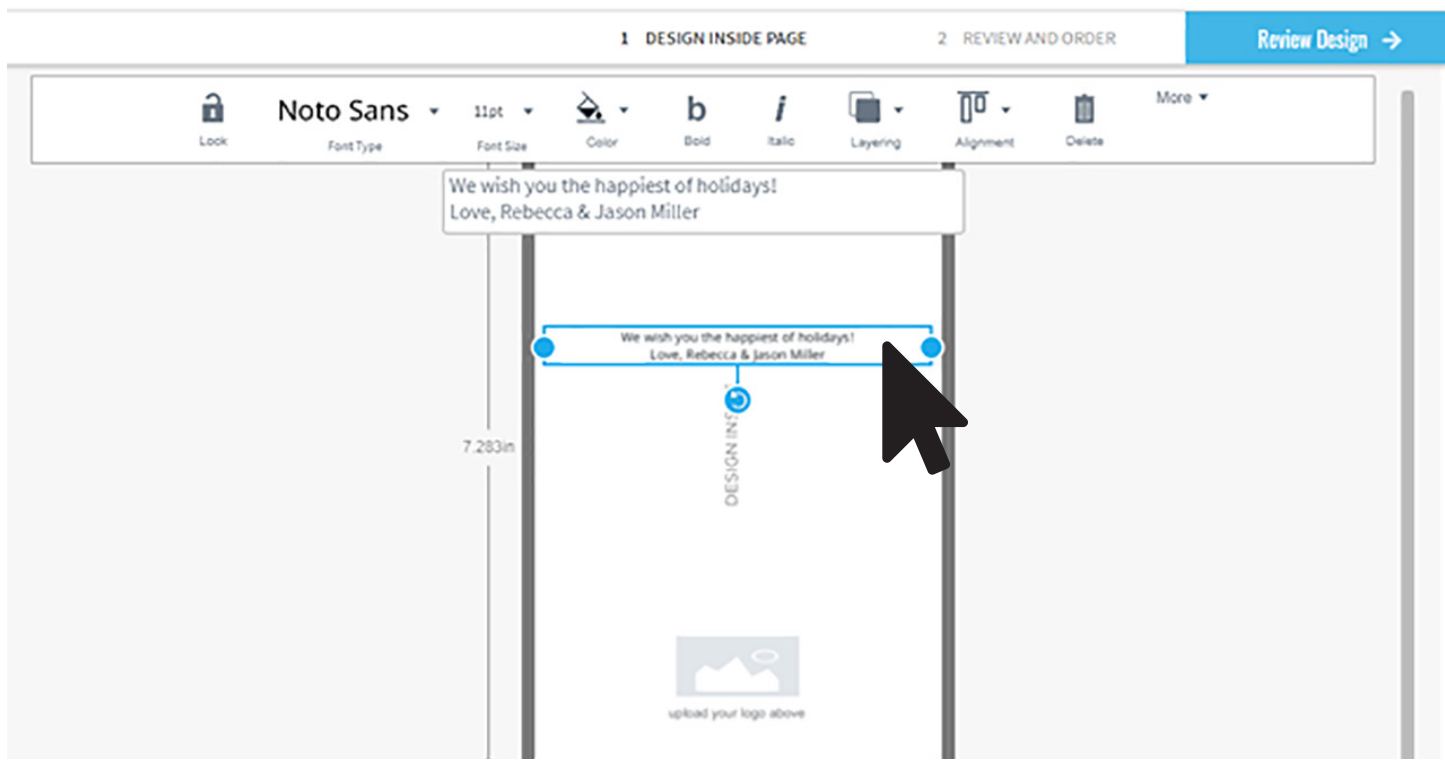
STEP 3 : DESIGN

There are a lot of ways to customize your card in the design studio. These steps will show you how to add and personalize your message.

Add a personal message in the text box. As you type, you will see the text also appear in the center of your card.

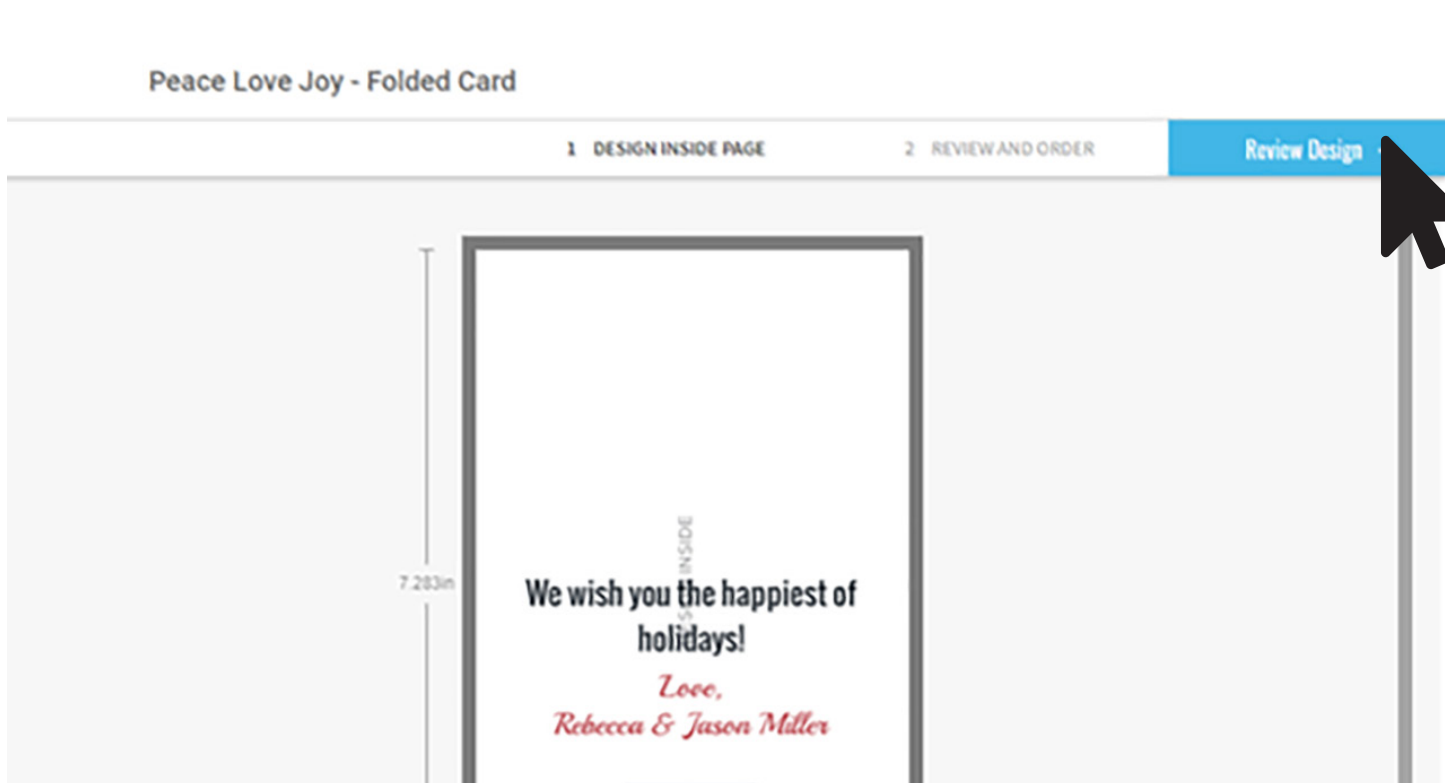
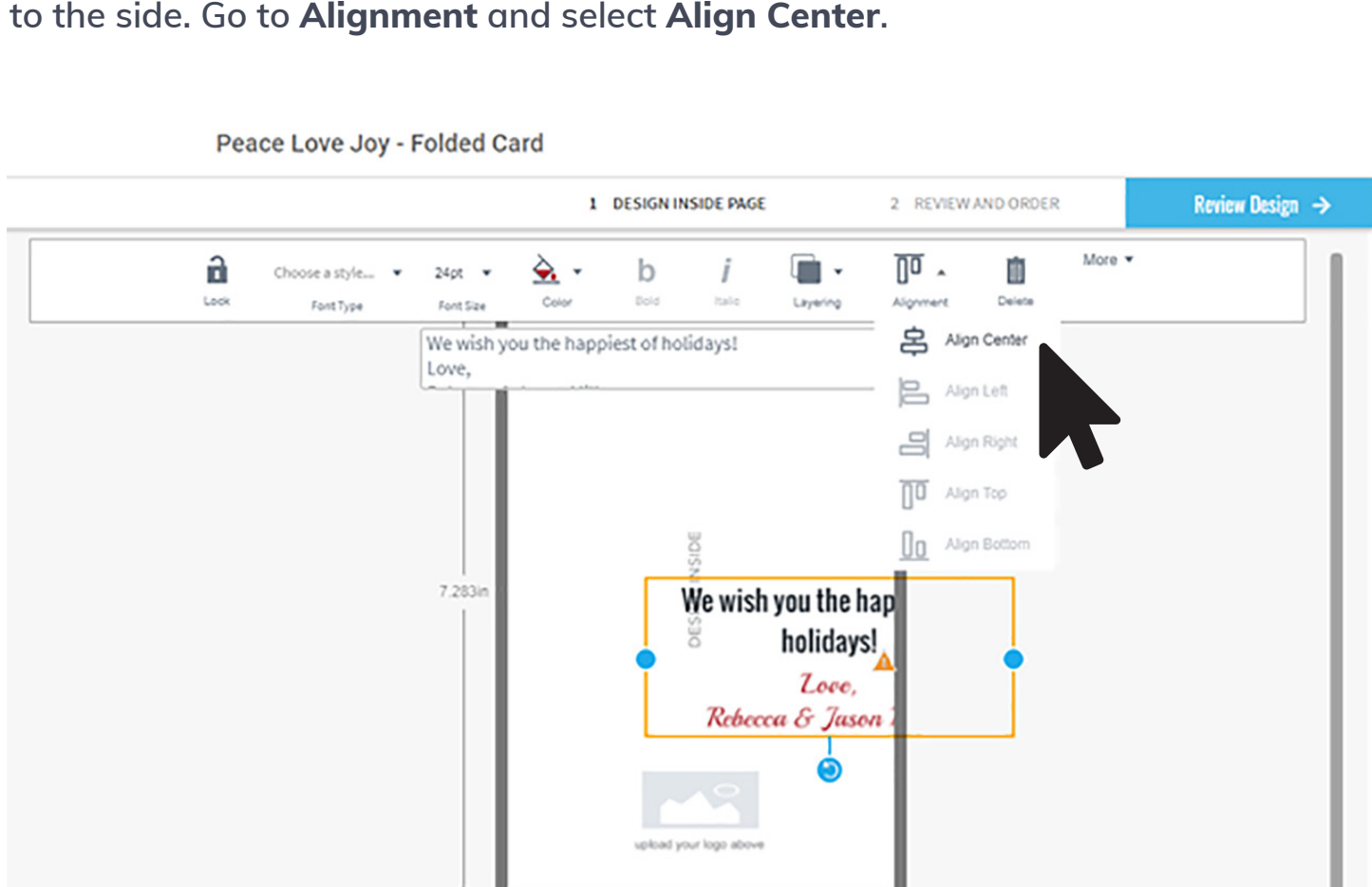


Adjust your message by selecting the text box directly on the card. Once you enter your text, you will notice the text design box will appear. Here you can change your font, size, and color.



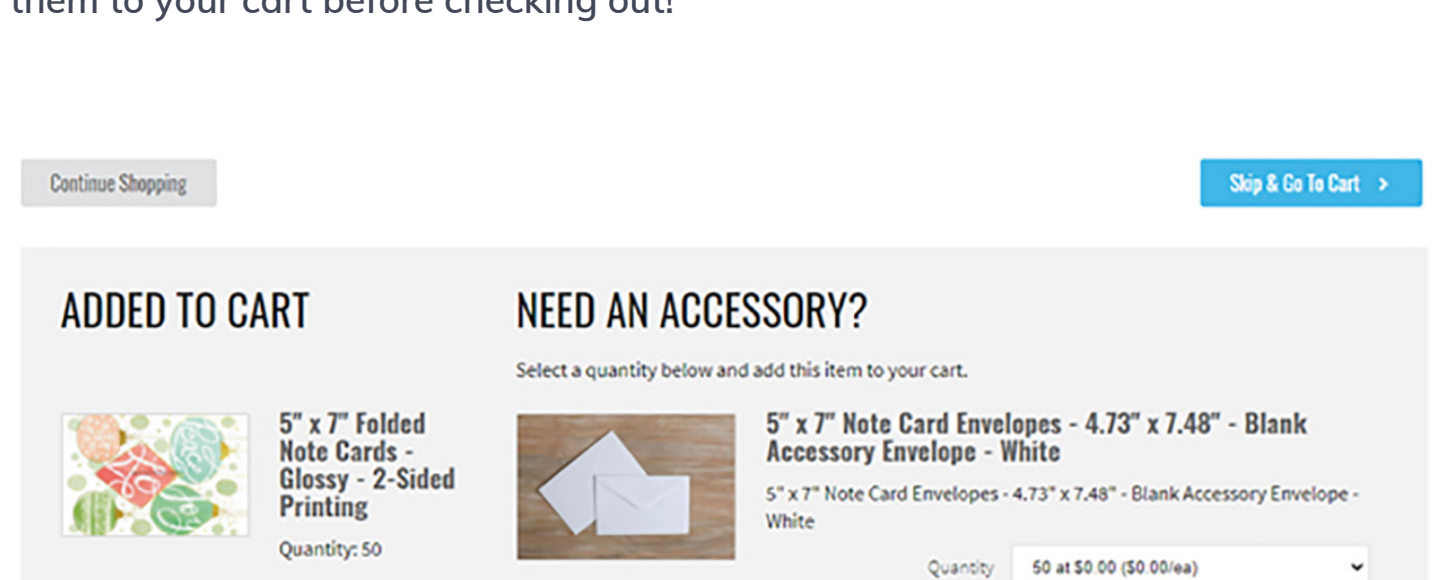
As you change your message, you might want to move your text field. It's easy! You click, hold, and drag your text box. Since this is a manual process, you want to make sure your text is centered.

You also might notice an alert icon that your text may not print if it's too far to the side. Go to **Alignment** and select **Align Center**.



STEP 4 : ADD FREE ENVELOPES

Free envelopes will populate when you select **Add To Cart** - be sure to add them to your cart before checking out!



If you have questions, visit our **Help Chat** located at the bottom of each page!